

SUPERINTENDENT'S UPDATE

KENILWORTH PUBLIC SCHOOLS
TAKING THE

LEAP

2022-23 District & School Goals

November 18, 2022

Dear School Community,

Each year we re-evaluate our goals for Kenilworth Public Schools. These goals bring us closer to achievements and define what we stand for as a district.

We share our goals to provide context for every move we make, such as the technology we bring into classrooms or a math or reading assessment.

The goals we set to date have led to wins that will strengthen our schools and community: The passage of a bond referendum that will let us make \$31.4 million in improvements; increased innovation; and enhanced college readiness programs.

We have advanced last year's goals to the next level as we make progress. They will continue to guide us toward our destination.

1 ADVANCE DIVERSITY, EQUITY & INCLUSION

We are partnering with Teachers College, Columbia University for outside support. This includes a third-party audit to review our curriculum and educational approaches. We will follow their recommendations for building a more culturally responsive, inclusive, and welcoming school community, such as holding more events like our recent Hispanic Heritage Night.

2 SUPPORT INNOVATIVE TEACHING & LEARNING

We will continue to upgrade technology and create opportunities to make our middle and high school classes more innovative. So far, we have installed dozens of new SMARTBoards and offered new electives like: Invention & Innovation, STEM Lab 7 & 8, AP Computer Science Principles Mobile, Video Game Design and E-Sports & Gaming at Brearley Middle-High School.

3 PLAN NEXT STEPS FOR REFERENDUM PROJECTS

We have moved on to the design and project development phase. Over the next few months, our consultants will finalize architectural plans and prepare projects for bid.

Construction is tentatively scheduled to begin in 2023. Sixth-graders are expected to begin attending an expanded Brearley Middle-High School in September 2025. We will continue to share information on project phases and timelines. We're currently firming those up.

4 ENHANCE STUDENT ENGAGEMENT

We are studying and applying the best practices for student engagement - particularly in a post-pandemic environment where the rules of engagement have changed.

5 LEVERAGE DATA TO ACCELERATE ACHIEVEMENT

We will continue using multiple data sources to meet students' academic, behavioral, and social-emotional needs.

We also set goals for our schools that align with our district's goals.

Brearley School Goals:

- Develop guidance counseling curricula around college/post-secondary planning to target student motivation and school engagement which will help improve academic achievement.
- Support teachers in student engagement and inquiry-based learning strategies through subject-specific professional learning to improve academic achievement; reinforce and follow up with teachers through observation and walk-through feedback.

Harding School Goals:

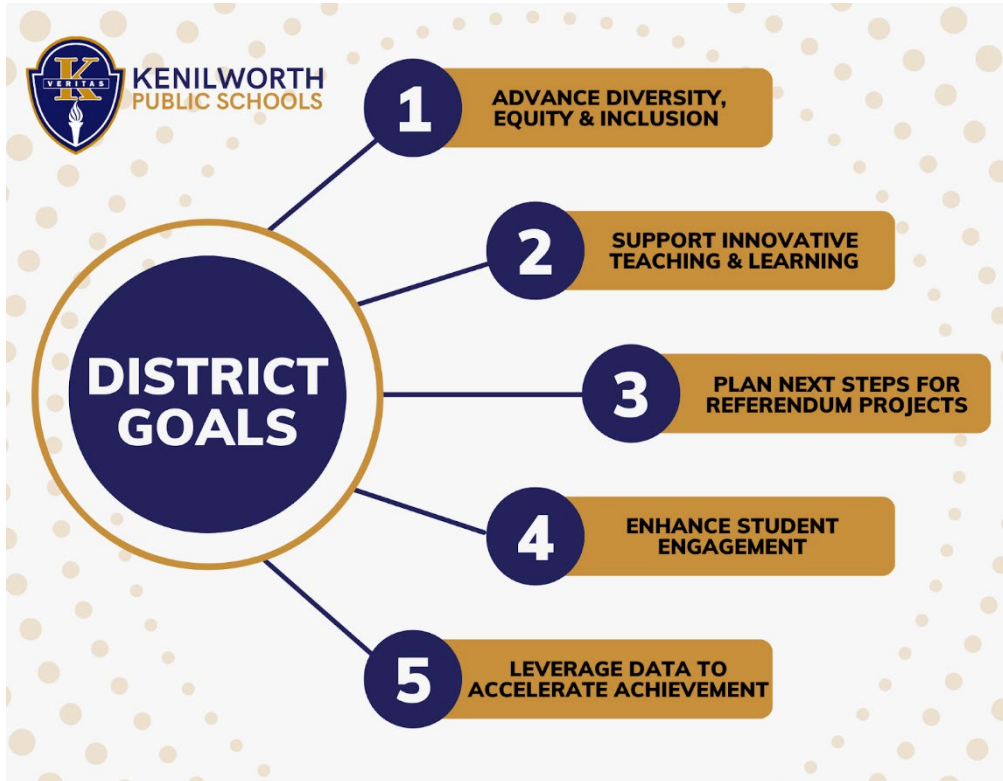
- Expand our work in data-driven instruction through the implementation of building-level data teams and monthly Professional Learning Communities.
- Improve classroom design to incorporate collaborative workspaces and integrated technology, as part of establishing a 21st-century student-centered learning environment

We couldn't accomplish our goals without the support of our community. Thank you for working as a team toward significant achievements for Kenilworth.

Sincerely,



Kyle C. Arlington
Superintendent of Schools



Estimada comunidad escolar:

Cada año re-evaluamos nuestras metas para las Escuelas Públicas de Kenilworth. Estas metas nos acercan a los logros y definen lo que representamos como distrito.

Compartimos nuestras metas para proporcionar contexto para cada movimiento que hacemos, cómo la tecnología que llevamos a las aulas o una evaluación de matemáticas o lectura.

Las metas que establecimos hasta la fecha han llevado a victorias que fortalecerán nuestras escuelas y nuestra comunidad: La aprobación de un referéndum de bonos que nos permitirá obtener \$31.4 millones en mejoras; mayor innovación; y programas mejorados de preparación para la universidad.

Nuestros objetivos son similares a los del año pasado, pero han avanzado al siguiente nivel a medida que avanzamos. Continuarán guiándonos hacia nuestro destino.

1 ADVANCE DIVERSITY, EQUITY & INCLUSION

Nos asociamos con Teachers College, Columbia University para obtener apoyo externo. Esto incluye una auditoría de terceros para revisar nuestro plan de estudios y enfoques educativos. Seguiremos sus recomendaciones para construir una comunidad escolar más culturalmente receptiva, inclusiva y acogedora, como la celebración de más eventos como nuestra reciente Noche de la Herencia Hispana.

2 SUPPORT INNOVATIVE TEACHING & LEARNING

Continuaremos actualizando la tecnología y creando oportunidades para que nuestras clases de secundaria y preparatoria sean más innovadoras. Hasta ahora, hemos instalado docenas de nuevos SMARTBoards y hemos ofrecido nuevas asignaturas optativas como: Invention & Innovation, STEM Lab 7 & 8, AP Computer Science Principles Mobile, Video Game Design, and E-Sports & Gaming en Brearley Middle-High School.

3 PLAN NEXT STEPS FOR REFERENDUM PROJECTS

Hemos pasado a la fase de diseño y desarrollo del proyecto. Durante los próximos meses, nuestros consultores finalizarán los planos arquitectónicos y prepararán los proyectos para la licitación.

La construcción está programada tentativamente para comenzar en 2023. Se espera que los estudiantes de sexto grado comiencen a asistir a una escuela media y secundaria ampliada de Brearley en septiembre de 2025. Continuaremos compartiendo información sobre las fases y los plazos del proyecto. Actualmente los estamos reafirmando.

4 ENHANCE STUDENT ENGAGEMENT

Estamos estudiando y aplicando las mejores prácticas para la participación de los estudiantes, particularmente en un entorno posterior a la pandemia donde las reglas de participación han cambiado.

5 LEVERAGE DATA TO ACCELERATE ACHIEVEMENT

Continuaremos utilizando múltiples fuentes de datos para satisfacer las necesidades académicas, conductuales y socioemocionales de los estudiantes.

No podríamos lograr nuestras metas sin el apoyo de nuestra comunidad. Gracias por trabajar en equipo hacia logros significativos para Kenilworth.

The Kenilworth Public Schools, the center of a small supportive community, is dedicated to creating adaptable lifelong learners who are capable of making critical and informed decisions as responsible citizens. Together, we set high expectations for student achievement according to individual goals as well as external standards. Our curriculum, instructional program, services and resources evolve and adapt to an ever-changing world.